



ELT Ranch Properties, Inc.
Agricultural Brokerage Services

±320.00 Acre Sacramento Borden Ranch – Galt, CA

26th Leaf Chandler/Howard Walnuts – ±4,800#/Ac. Avg.



EXCLUSIVELY PRESENTED BY:

Kyle Dalrymple
Associate Broker - DRE #01857897
530.870.2732

Executive Summary

Location: Property is situated along the north side of Borden Road, west side of Alabama Road and south side of Angle Road, ±3.75 miles northeast of Galt and Hwy. 99 in Sacramento County, CA.

Land Area/Property Size: ±320.00 Gross Acres

<u>Land Use:</u>	<u>Block</u>	<u>Variety</u>	<u>Net Ac.</u>	<u>Planted</u>	<u>Tree Age</u>	<u>Spacing</u>
	1	Chandler	54.94	1998	26 th	21'x21'
	2	Chandler	43.75	1998	26 th	21'x21'
	3	Howard	76.66	1998	26 th	21'x21'
	4	Chandler	34.67	1998	26 th	21'x21'
	5	Chandler	52.63	1998	26 th	21'x21'
	6	Chandler	32.80	1998	26 th	21'x21'
			295.45	Total Net Tree Ac.		

Assessor's Parcel Number: 152-0080-009

Soils: Soils are comprised of: ±73% San Joaquin silt loam (Class 3), ±20% San Joaquin-Xerarents complex (NR) and ±5% Xerarents-San Joaquin complex (Class 3) per USDA Soil Survey.

Irrigation Supply: (2) on-site ag. wells each equipped with 150 HP electrical turbine motors producing over 3,000 GPM, combined. Recent pump tests available upon request.

Sustainable Groundwater Management Act: Property is in the San Joaquin Valley – Consumnes subbasin (5-022.16) which is rated as a **MEDIUM** priority subbasin. Property is within the Galt Irrigation District GSA.

Site Improvements: Fenced equipment yard with fuel depot.

Comments: ±300-acre walnut ranch in a single contiguous unit with stable groundwater supplies and strong orchard yield history. There is another ±150-acre tract of similarly aged walnuts ±1/2 mile south also available (\$25,000/acre)

Offer Price: **\$22,200 per acre (\$7,100,000)**

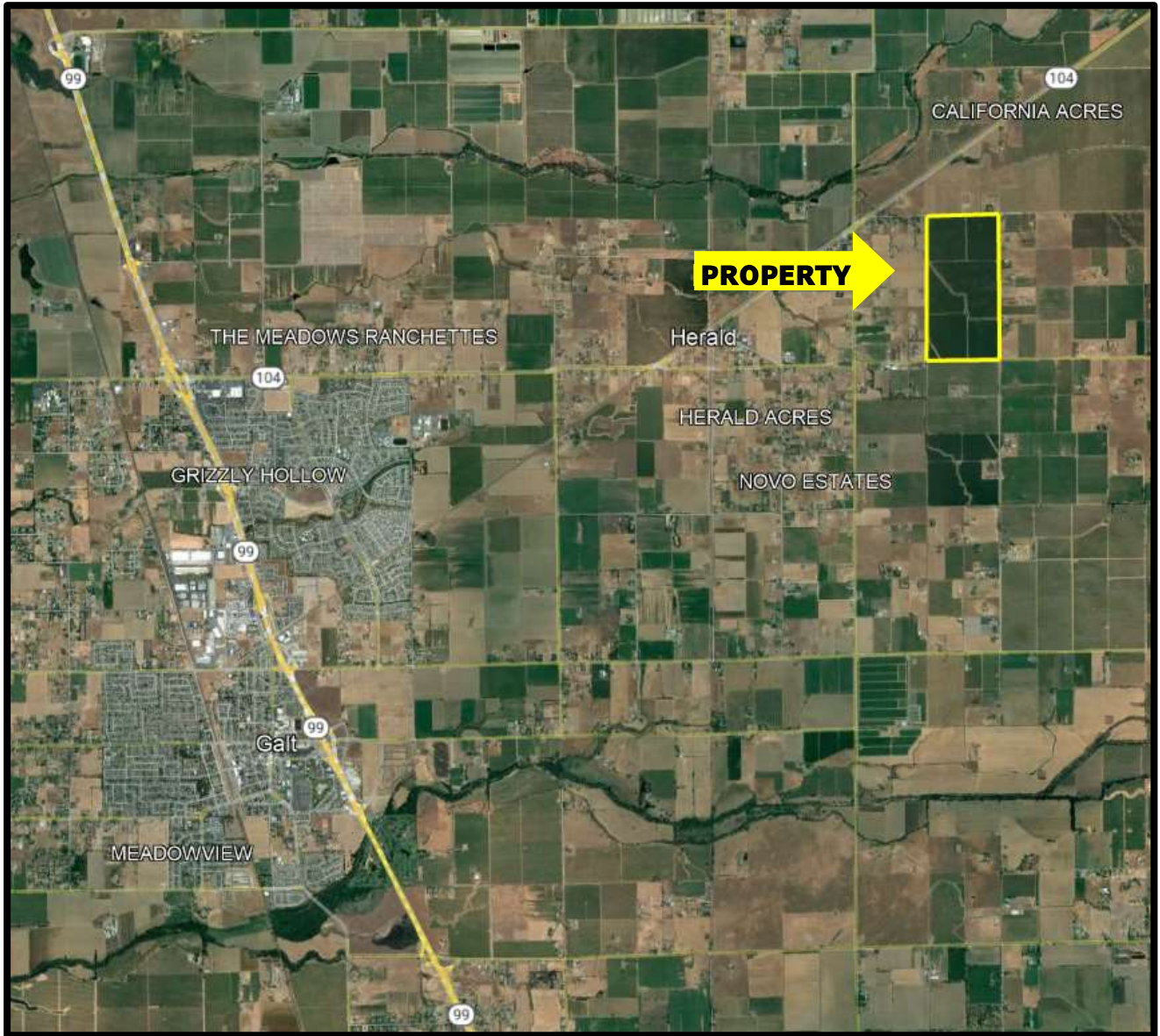
~~\$26,000 per acre (\$8,300,000)~~

SELLER WILL LOOK AT ALL OFFERS

Property Showing: Qualified buyers contact listing broker to schedule property tour.
DO NOT VISIT PROPERTY WITHOUT SCHEDULING W/ BROKER

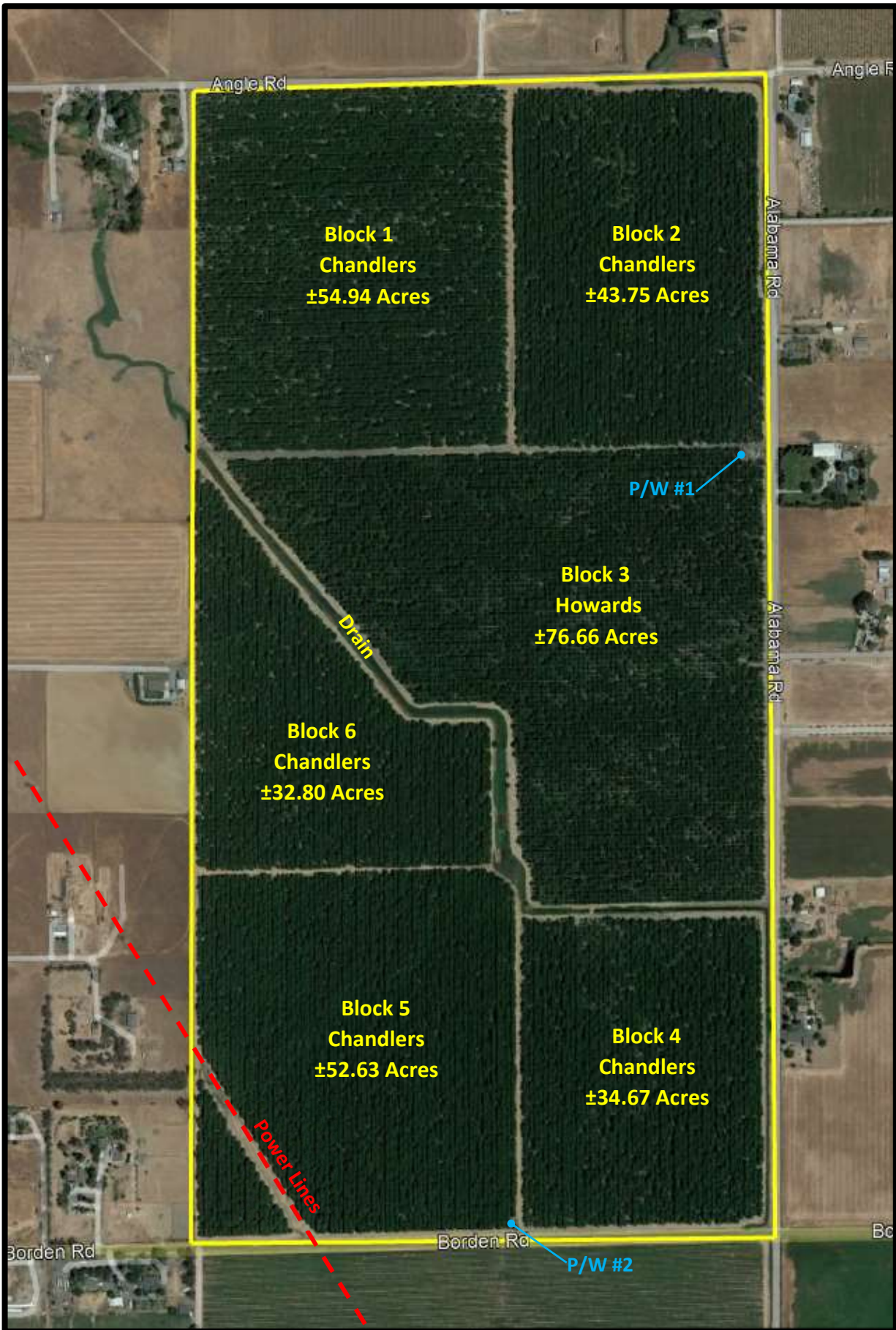
Contact: Kyle Dalrymple at 530-870-2732 or email to kyle@eltappraisers.com

PROPERTY LOCATION MAP



*This information was obtained from sources that are deemed reliable but are in no way guaranteed by ELT Ranch Properties, Inc., its Brokers or Agents. Prospective Buyers should check all facts to their own Satisfaction. This offer is subject to prior sale, price change, and/or withdrawal from the market.

PROPERTY PLAT MAP



*This information was obtained from sources that are deemed reliable but are in no way guaranteed by ELT Ranch Properties, Inc., its Brokers or Agents. Prospective Buyers should check all facts to their own Satisfaction. This offer is subject to prior sale, price change, and/or withdrawal from the market.

PROPERTY PHOTOGRAPHS



*This information was obtained from sources that are deemed reliable but are in no way guaranteed by ELT Ranch Properties, Inc., its Brokers or Agents. Prospective Buyers should check all facts to their own Satisfaction. This offer is subject to prior sale, price change, and/or withdrawal from the market.

PROPERTY PHOTOGRAPHS



*This information was obtained from sources that are deemed reliable but are in no way guaranteed by ELT Ranch Properties, Inc., its Brokers or Agents. Prospective Buyers should check all facts to their own Satisfaction. This offer is subject to prior sale, price change, and/or withdrawal from the market.

PROPERTY PHOTOGRAPHS



*This information was obtained from sources that are deemed reliable but are in no way guaranteed by ELT Ranch Properties, Inc., its Brokers or Agents. Prospective Buyers should check all facts to their own Satisfaction. This offer is subject to prior sale, price change, and/or withdrawal from the market.

PROPERTY PHOTOGRAPHS

