



**ELT Ranch Properties, Inc.**  
*Agricultural Brokerage Services*

**±135.21 ACRES CERTIFIED ORGANIC SHD OLIVES**  
**DUAL WATER SUPPLY — ORLAND, GLENN COUNTY**



**Kyle Dalrymple, Broker DRE #01857897**  
**530-870-2732 - [kyle@eltappraisers.com](mailto:kyle@eltappraisers.com)**

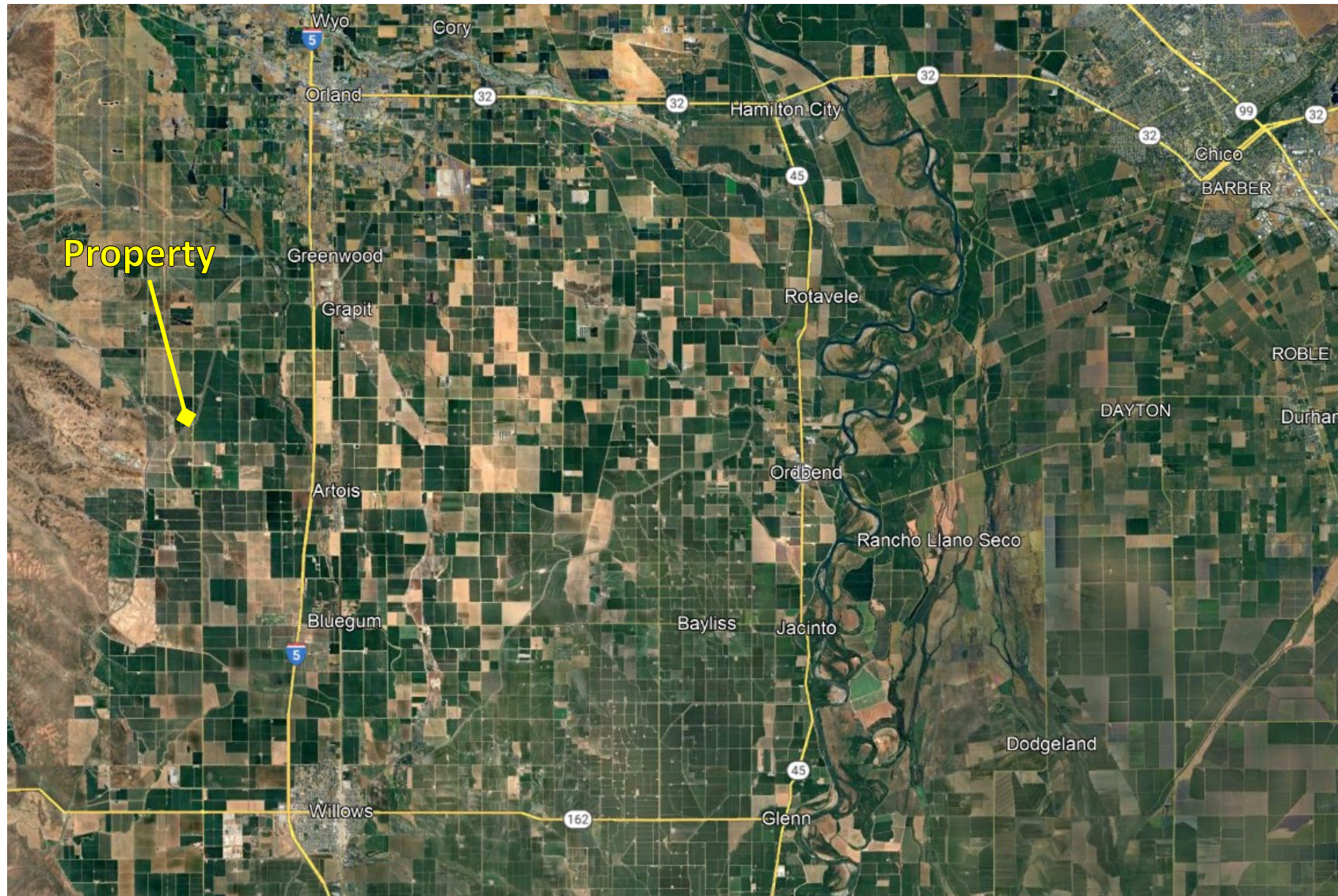
\*This information was obtained from sources that are deemed reliable but are in no way guaranteed by ELT Ranch Properties, Inc., its Brokers or Agents. Prospective buyers should check all facts to their own Satisfaction. This offer is subject to prior sale, price change, and/or withdrawal from the market.





# ELT Ranch Properties, Inc.

## *Agricultural Brokerage Services*



**Kyle Dalrymple, Broker DRE #01857897**  
**530-870-2732 - [kyle@eltappraisers.com](mailto:kyle@eltappraisers.com)**

**Page 2 of 8**

\*This information was obtained from sources that are deemed reliable but are in no way guaranteed by ELT Ranch Properties, Inc., its Brokers or Agents. Prospective buyers should check all facts to their own Satisfaction. This offer is subject to prior sale, price change, and/or withdrawal from the market.





# ELT Ranch Properties, Inc.

*Agricultural Brokerage Services*



## OFFERING SUMMARY

- ±119.00 net ac. of SHD Arbequina olives planted in 2007 - \*Certified Organic\*
- Planted to 5'x13' spacing (±670 TPA)
- DUAL WATER SUPPLY - High volume ag. well with tail-water return pump along with rights to surface water from the Orland-Artois Water District
- ±1/2 Mile frontage on the TC Canal
- Enrolled in the Williamson Act (low taxes)
- Soils are primarily Hillgate loam/gravelly loam, Cortina very gravelly sandy loam and Tehama silt loam (Class 2 & 3)
- Strong organic mill contract price

**Kyle Dalrymple, Broker DRE #01857897**  
530-870-2732 - [kyle@eltappraisers.com](mailto:kyle@eltappraisers.com)

Page 3 of 8

\*This information was obtained from sources that are deemed reliable but are in no way guaranteed by ELT Ranch Properties, Inc., its Brokers or Agents. Prospective buyers should check all facts to their own Satisfaction. This offer is subject to prior sale, price change, and/or withdrawal from the market.



# ELT Ranch Properties, Inc.

## *Agricultural Brokerage Services*

### PROPERTY DETAILS

Property address: 3601 County Road C, Orland, CA

2024 harvest was first certified organic crop.

Ag. well drilled to a depth of  $\pm 800'$ . Very strong producer. Diesel powered pumping plant (not subject to PG&E) with Arkal disc filters and fertilizer injection.

Irrigated in three sets via drip.

Olives have received  $\pm 5-7$  tons/acre of compost/manure mix every year for the last 5 years.

Management has implemented diverse cover cropping on olive acreage every year for the last 5 years.

Property was annexed into the Orland-Artois Water District in 2021 as a Class II water right holder. Water available, yet not currently utilized.

### 6-Year Production History

Year	Gallons	Net Ac.	Gal/Ac.
2019	15,255	119	128.2
2020	8,442	119	70.9
2021	17,414	119	146.3
2022	Frost	119	Frost
2023	8,663	119	72.8
2024	14,171	119	119.1
Average (Omitting '22):			107.5

**PRICE: \$3,200,000** ( $\pm \$23,667$ /gross acre)

**Call/Text/Email for more info or to schedule a tour.**

**Kyle Dalrymple, Broker DRE #01857897**  
530-870-2732 - [kyle@eltappraisers.com](mailto:kyle@eltappraisers.com)

**Page 4 of 8**

\*This information was obtained from sources that are deemed reliable but are in no way guaranteed by ELT Ranch Properties, Inc., its Brokers or Agents. Prospective buyers should check all facts to their own Satisfaction. This offer is subject to prior sale, price change, and/or withdrawal from the market.





# ELT Ranch Properties, Inc.

*Agricultural Brokerage Services*



**Kyle Dalrymple, Broker DRE #01857897**  
530-870-2732 - [kyle@eltappraisers.com](mailto:kyle@eltappraisers.com)

**Page 5 of 8**

\*This information was obtained from sources that are deemed reliable but are in no way guaranteed by ELT Ranch Properties, Inc., its Brokers or Agents. Prospective buyers should check all facts to their own Satisfaction. This offer is subject to prior sale, price change, and/or withdrawal from the market.





# ELT Ranch Properties, Inc.

## *Agricultural Brokerage Services*



**Kyle Dalrymple, Broker DRE #01857897**  
530-870-2732 - [kyle@eltappraisers.com](mailto:kyle@eltappraisers.com)

**Page 6 of 8**

\*This information was obtained from sources that are deemed reliable but are in no way guaranteed by ELT Ranch Properties, Inc., its Brokers or Agents. Prospective buyers should check all facts to their own Satisfaction. This offer is subject to prior sale, price change, and/or withdrawal from the market.





# ELT Ranch Properties, Inc.

*Agricultural Brokerage Services*



**Kyle Dalrymple, Broker DRE #01857897**  
530-870-2732 - [kyle@eltappraisers.com](mailto:kyle@eltappraisers.com)

**Page 7 of 8**

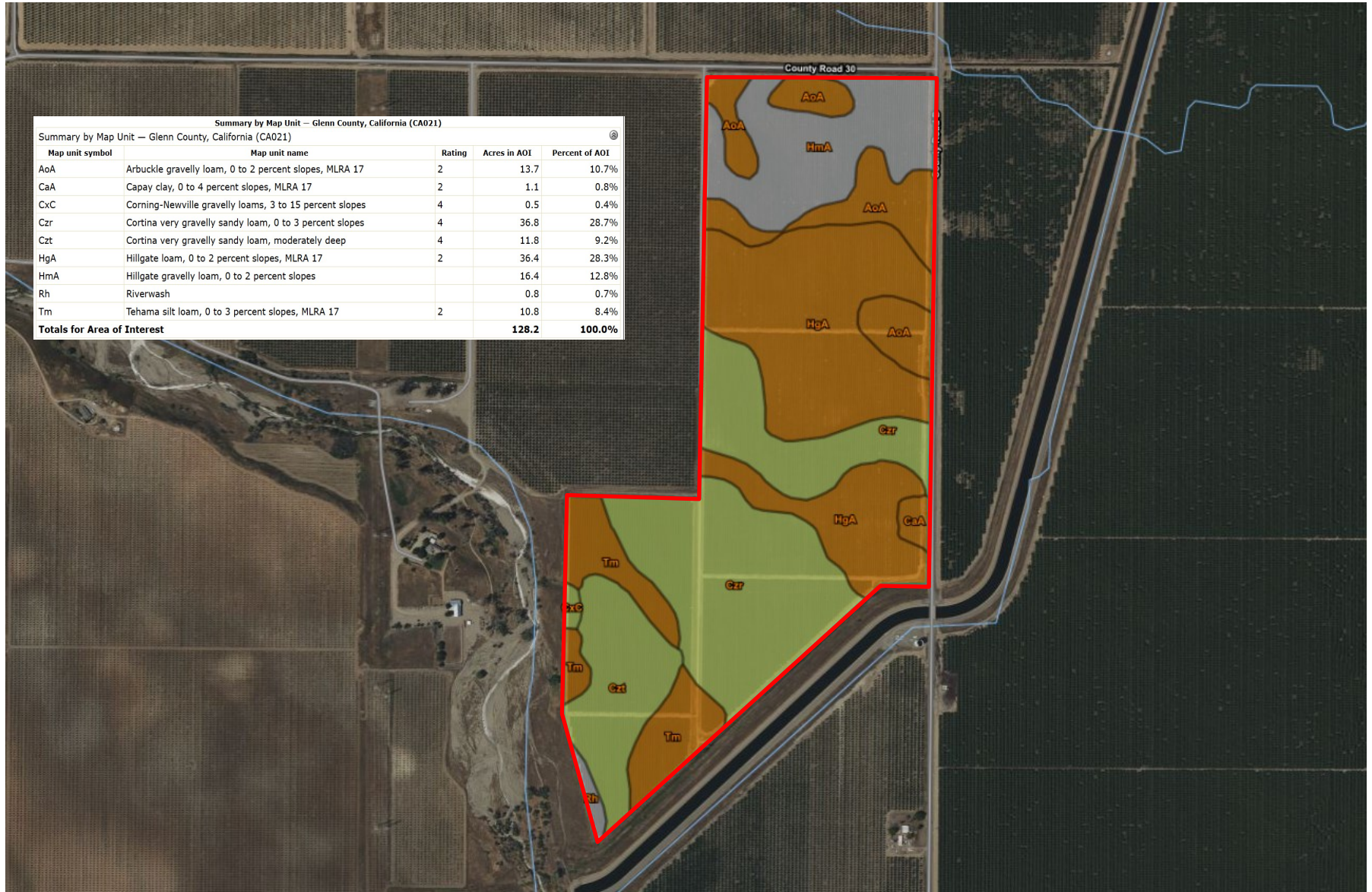
\*This information was obtained from sources that are deemed reliable but are in no way guaranteed by ELT Ranch Properties, Inc., its Brokers or Agents. Prospective buyers should check all facts to their own Satisfaction. This offer is subject to prior sale, price change, and/or withdrawal from the market.





# ELT Ranch Properties, Inc.

## Agricultural Brokerage Services



**Kyle Dalrymple, Broker DRE #01857897**  
**530-870-2732 - kyle@eltappraisers.com**

**Page 8 of 8**

\*This information was obtained from sources that are deemed reliable but are in no way guaranteed by ELT Ranch Properties, Inc., its Brokers or Agents. Prospective buyers should check all facts to their own Satisfaction. This offer is subject to prior sale, price change, and/or withdrawal from the market.